

# THE SHINGLE LIFE

An update of a classic seaside architectural style, our **2017 Idea House** is built for easy living, with a flexible layout that can welcome multiple generations

By **Jill Connors** | Photographs by **Nat Rea**  
Produced by **Claudia Jepsen** | Styling by **Denise Enright**



ABOVE: Designed by Union Studio Architecture & Community Design and built by Sweenor Builders, the Idea House incorporates classic Shingle-style elements: gambrel roofs, a balcony, walls that curve into windows, a deep front porch—and, of course, wood shingle siding.



ABOVE: The living area feels both beachy and elegant, thanks to a neutral color scheme for walls and furniture, textural touches such as woven window shades, and clean-lined upholstered pieces. The TV console is made of reclaimed wood; an updated candle chandelier serves as a

focal point overhead. The vaulted ceiling is lined with white-painted V-groove boards accented by dark-stained beams. Walls of windows invite in light and fresh air, with French doors providing access—and open sight lines—to the adjacent screened-in porch.

**THESE PAGES**  
ASPHALT ROOF SHINGLES: GAF  
CEDAR SHINGLES: SBC in Seashell  
EXTERIOR TRIM: LIFESPAN Solid Select  
BALCONY RAILING: Walpole Outdoors

GARAGE DOORS: Clopay  
EXTERIOR AND INTERIOR DOORS: Simpson Door Company  
PORCH FLOORING: AZEK  
PAINT: Olympic's Swirling Smoke (exterior trim, living room walls) and Chinese Porcelain (front door)

SCONCES: Barn Light Electric  
PORCH AND LIVING ROOM FURNISHINGS AND ACCESSORIES: hayneedle.com  
CHANDELIER: House of Antique Hardware  
WINDOW TREATMENTS: Smith & Noble





## As a young visitor sprinted

through the mudroom of This Old House’s 2017 Idea House in East Matunuck, Rhode Island, recently, she stopped and pivoted in front of the mudroom’s dog-washing sink, with a twinkle in her eye. “Cool!” she exclaimed, reaching for the hand sprayer. “Where’s the puppy?”

Builder Jeff Sweenor, a dog owner himself, appreciates the impulse. “This house has so many special details, and they are all about making the house extremely functional, livable, and even fun. Every room has something extra.”

A collaboration between Sweenor Builders, Union Studio Architecture & Community Design, and numerous This Old House sponsors and contributors, the house delivers a medley of features that are at the top of homeowners’ wish lists today. Its open-plan living areas promote easy circulation; the first-floor master suite supports aging in place; and multiple levels accommodate adult children and grandchildren. Weather-resistant and energy-efficient materials and systems minimize maintenance, while smart-home features maximize convenience and comfort. Add in generous outdoor-living spaces to make entertaining easier, and custom touches that supply function and personality throughout, and you’ve got all the makings of a dream beach house.



**ABOVE LEFT:** The front entry sets a casual beach-house tone with a cushioned built-in bench, a crisp-white Chippendale-style stair railing, and a shiplap accent wall painted bright blue. The rift-sawn and quartersawn white oak floors are stained to suggest driftwood.

**ABOVE:** Beneath a coffered ceiling, the dining room is furnished with sophisticated, sculptural pieces, including linen-upholstered spindle-back dining chairs and an oak-veneer pedestal table. Pleated panel draperies in a lattice print add graphic punch.

**RIGHT:** Beyond a custom-cabinet-and-column divider, the living room ceiling vaults upward, helping to distinguish the two open-plan spaces. V-groove boards tie the different ceiling treatments together.

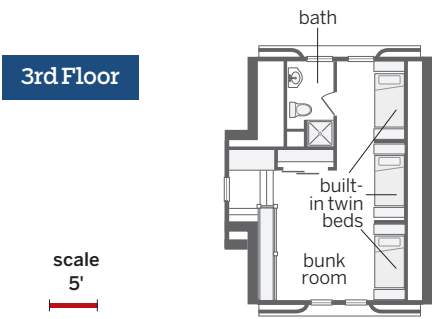
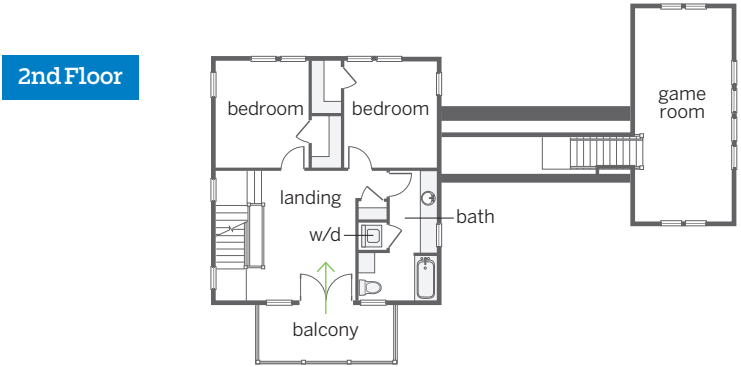
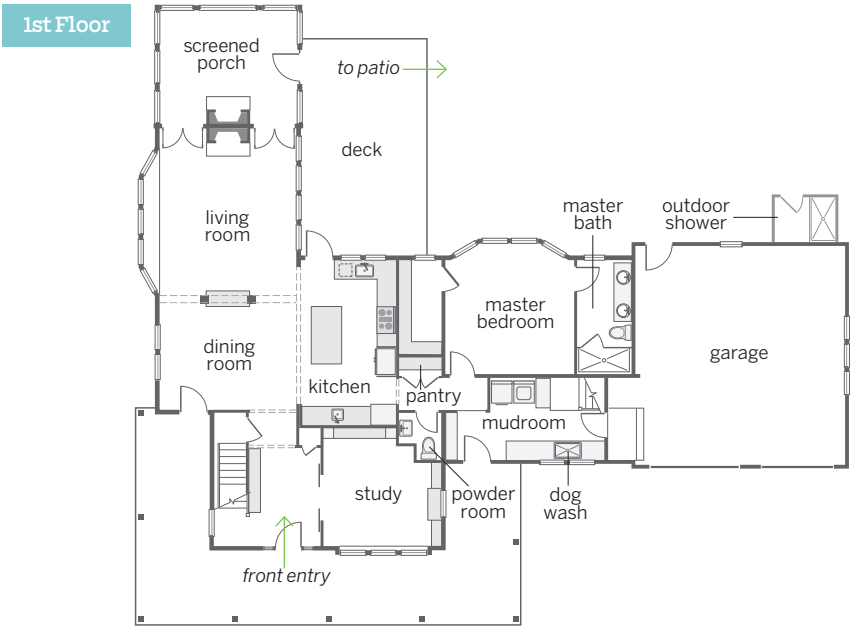
**THESE PAGES**  
PAINT: Olympic’s Everlasting (stairway accent wall), Delicate White (stair railing, ceilings), and Swirling Smoke (dining room and living room walls)  
LIGHTING: House of Antique Hardware

STAIR RAILING AND BUILT-INS: Sweenor Builders Custom Millwork & Cabinetry  
DINING ROOM AND LIVING ROOM FURNISHINGS AND ACCESSORIES: hayneedle.com  
DRAPERY FABRIC: Smith & Noble



## Floor Plans

The 3,200-square-foot house’s flexible floor plan allows for one-level living, if desired. In addition to open-plan living spaces, the first floor features a master suite, mudroom/laundry, powder room, and study. Two upstairs bedrooms, a bunk room, a game room, and two more baths accommodate family and guests. Two porches, a deck, and a patio (not shown) offer entertaining space.



scale  
5'

**WATCH A 360° VIDEO TOUR!**  
Take a virtual walk-through of the 2017 Idea House at [thisoldhouse.com/3Dtour](http://thisoldhouse.com/3Dtour)

FLOOR PLANS: IAN WORPOLE





ABOVE: The kitchen's zoned design includes a center island for gathering and prep work; a windowed cleanup area complete with an ergonomic pull-down faucet and stainless-steel sink; food-storage areas along the cooktop wall; and a wet-bar beverage center that's out of the cooking fray. The colors of sand, sky, and sea inspired the palette: The mosaic tile backsplash suggests sea glass,

the perimeter countertops evoke white sand, the island countertop has a driftwood look, and the cabinets are painted a deep ocean blue. The custom vent hood's nautical-inspired brass trim is repeated in the pendants and bar pulls. The task lighting is simple to adjust—as is true throughout the house—with a system that includes wireless dimmers, remotes, and mobile app control.

**THESE PAGES**  
SINKS AND FAUCETS: American Standard  
PENDANT LIGHTS: House of Antique Hardware  
WHITE QUARTZ COUNTERTOPS: Caesarstone  
WOOD ISLAND TOP: Raging River Counterworks  
CABINETRY: Diamond Cabinets

CABINET HARDWARE: Emtek  
BAR STOOLS: hayneedle.com  
SLIM WINE COOLER: Vinotemp  
APPLIANCES: Wickford Appliance & Lighting  
VENT HOOD: The Tin Shop  
TILE: The Tile Shop  
LIGHTING CONTROL: Caséta by Lutron

BELOW: The cleanup zone includes a semiprofessional stainless-steel faucet; the island invites company with its easy-on-the-elbows wood top and upholstered stools.



Perhaps best of all, these features take shape within a 3,200-square-foot house whose outward face finds design inspiration in one of New England's most iconic architectural styles: Shingle style. "The details and forms draw on Rhode Island's 19th-century tradition of Shingle-style architecture, with gambrel roofs, flared gables, and curving shingled walls at balconies and windows," says principal architect Don Powers of Union Studio Architecture, who teamed up with project architect Christina Carlson on the design of the house. "But we adapted those historical elements to the way people like to live right now," he says.

A prime example of this updated approach is the open-plan kitchen-dining-living area that is the heart of the home. "We wanted to create the easy flow and communication from one space to the next that is so desirable today," Powers says. But the team ensured that the open-plan space still had a traditional sense of defined rooms—something often missing in contemporary open spaces—by varying the ceiling design. A vaulted ceiling with white-painted V-groove boards distinguishes the living area; a coffered ceiling



with V-groove insets marks the dining area; and a smooth plastered ceiling caps the kitchen. Structural columns flanking a built-in cabinet further delineate the living and dining spaces, while providing useful storage and maintaining open sight lines.

“We also created a layout so that all the living could happen on the first floor if that’s what is desired,” says Carlson, who felt strongly that the house should support one-level living for aging in place. “Many of our clients today insist on a first-floor bedroom,” she says. In addition to the first-floor master suite, thoughtful aging-in-place design features include minimal stairs from garage to main house to outdoor-living areas; maximum daylighting with walls of windows, as well as variable lighting control; lever-style handles and a curbless walk-in shower with a seat in the master bath; a first-floor laundry; and 40-inch-wide hallways.

Flexible upstairs spaces are designed to accommodate different scenarios, including multigenerational living. For example, visiting guests or grown



ABOVE: The powder room has a luxurious look, with a vessel sink atop a jewel-like quartz countertop, gray-blue painted wallpaper, and sleek brushed-nickel accents.

RIGHT: Sliding barn doors open onto the study, where a bright patterned rug sets the color palette for custom built-ins lined in lime green, a vintage desk refreshed with bright-blue paint, and a modern slipper chair in soft aqua.



ABOVE: A bay window opens up the master bedroom; lavender walls and soft neutral furnishings create a serene setting. The bed ups the comfort factor with adjustable head and foot positions, and a mattress-cooling system.

RIGHT: The master bath has a curbless shower and lever faucet handles for ease of use. Its ocean-motif wallpaper sets a refined tone, which is carried through in the polished marble floor and wall tile, and quartz vanity top.

**THESE PAGES**

BARN DOOR HARDWARE: **Goldberg Brothers**  
PAINT: **Olympic's Night**  
**Rendezvous** (powder room paintable wallpaper), **Lime Green** (study built-ins), and **Silver Chalice** (bedroom walls)  
VANITY TOPS: **Caesarstone**  
VANITIES: **Diamond Cabinets**  
BATH FIXTURES AND FITTINGS: **American Standard**  
LIGHTING: **House of Antique Hardware**

SMART BED: **Sleep Number**  
REMOTE-CONTROL WINDOW SHADES: **Serena by Lutron**  
FURNISHINGS AND ACCESSORIES: **hayneedle.com**  
CUSTOM DRAPERY FABRIC: **Osborne & Little**  
BATHROOM SHOWER SYSTEM AND ELECTRIC FLOOR WARMING: **Schluter Systems**  
BATH VENTILATION: **Panasonic**  
TILE: **The Tile Shop**  
WALLPAPER: **Graham & Brown** (powder room) and **Osborne & Little** (master bath)







**LEFT:** Packed with function, the mudroom features built-ins from one end to the other. A boot bench holds rows of hooks and cubbies; a heavy-duty washer and dryer are raised to comfort height; a dog-wash station is a thoughtful convenience. The slate floor stands up to grit and muddy paws.

**BELOW LEFT:** At the mudroom entry off the front porch, shell-colored stained shingles, a custom seagull cutout, and light-gray capped-polymer porch flooring all establish a beachy look.

**BELOW RIGHT:** Perfect for a quick rinse after a walk on the beach, the dog wash features a driftwood-look tile enclosure, a pebble-tile floor, and a low-flow hand sprayer. It doubles as a general-duty utility sink.

**EXPLORE MORE**  
Check out every nook and cranny of the Idea House at [thisoldhouse.com/ideahouse2017](http://thisoldhouse.com/ideahouse2017)

children can occupy the second floor of the main house, which holds two bedrooms and a bath with a secondary laundry. The youngest members of the household—or grandchildren—can take over the third-floor bunk room, and 20-somethings can gather in the bonus space above the garage, designed as a game room with a freestanding bar.

To play up the house’s personality, the design team pushed for some distinctive custom features. Chippendale-style railings with bold diagonal lines call attention to the stairways in the main house—and are even repeated on the outdoor balcony. The mudroom holds a dog-washing station with a wood-look tile enclosure, a pebble mosaic floor, and a hand sprayer. No dog in the house? No prob-

lem—the area doubles as a utility sink for sandy sneakers and swimsuits, right across from the washer and dryer, which are elevated on back-saving pedestals and incorporated into a wall of custom cabinetry. Built-ins throughout add function and storage—as well as architectural flair—from bookcases in the study with X-detailing on the doors to a front-entry bench with drawers to a mudroom drop zone with cubbies and coat hooks.

All these details, coupled with a color palette inspired by sea, sand, and sky, contribute to the refined beach-house look. “We used blues, creams, taupes, grays, and washed finishes to evoke the beach, but we also brought in a level of sophistication with rich fabrics, metal finishes, and classic, yet comfortable,

**ABOVE:** The screened-in porch can be accessed from the living room’s French doors or from the back deck. A gas fireplace extends the space’s use to three—or even four—seasons. Exposed cedar trusses stained off-white, a stone-clad chimney, board-and-batten walls, capped-polymer porch flooring, and upholstered outdoor furniture help it weather its openness to the elements in style.

**THESE PAGES**  
INTERIOR AND EXTERIOR DOORS: Simpson Door Company  
HARDWARE: Emtek  
PORCH FLOORING: AZEK  
CEILING FAN AND SCONCES: House of Antique Hardware  
FURNISHINGS AND ACCESSORIES: hayneedle.com  
ANCHOR WALL DECOR: Pink Pineapple  
GAS FIREPLACE: Wakefield Fireplace & Grills  
PAINT: Olympic’s Swirling Smoke (screened porch walls, doors), Dover Gray (fireplace), Shark (mudroom walls), and Black Flame (cubbies)  
DOG-WASH HAND SPRAYER: American Standard  
WASHER AND DRYER: Speed Queen  
MUDROOM/LAUNDRY COUNTERTOP: Caesarstone  
TILE: Tile Craft Design Center





BELOW: A gambrel roof adds distinction to the garage and provides upstairs space for a bonus room. The insulated carriage-house-style composite doors are built to withstand high winds; the larger door, accented with clerestory windows, offers easier access for oversize vehicles and watercraft.



furniture,” says interior designer Denise Enright. The color of the exterior window cladding became a jumping-off point for Enright, who used various shades of blue throughout, spiked with accents of green, dusty purple, and pink.

“This is definitely a very detail-rich house, whether it’s the built-ins that add so much function inside or the sweeps in the roofline that give it a traditional look outside,” says Jeff Sweenor, who relied on the craftsmanship of his 50-man crew, including son and apprentice Ryan, to get the exacting work done.

The gambrel roof, which has become one of this Idea House’s trademarks, is a more challenging way of framing a roof because of the change in pitch on the rafters as well as the bottom flares. The eyebrow dormer accenting the one-story mudroom connector is another iconic architectural detail that requires finesse, as does curving the traditional eastern white cedar shingles in a few key places, such as the windows at the gambrel peaks. “All these special moments add interest, and complexity, but in Jeff Sweenor, we knew we had a builder who could do it all,” says Don Powers.



ABOVE and LEFT: The garage’s gambrel-roof framing allows for lofty ceilings and angled walls that add a fun element to the room over the garage. Set up as a game room, complete with freestanding bar and vintage poker table, it could serve as a hangout for 20-somethings. It is accessed via a stairway in the mudroom.



**THESE PAGES**  
GARAGE DOORS: **Clopay**  
GARAGE LIGHTS: **Barn Light Electric**  
WINDOWS: **Andersen**  
DRIVEWAY PAVERS: **Unilock**  
GAME ROOM FURNISHINGS AND ACCESSORIES: **hayneedle.com**  
RECLAIMED-WOOD PLANK GAME-ROOM ACCENT WALLS: **Stikwood**  
MINI KEG DISPENSER: **Vinotemp**  
SOUND SYSTEM: **Bose**  
SECOND-FLOOR LANDING WALL MURAL: **Murals Wallpaper**  
SECOND-FLOOR LANDING AND BEDROOM FURNITURE AND ACCESSORIES: **AllModern**  
SMART BED, BED LINENS, AND PILLOWS: **Sleep Number**  
WINDOW TREATMENTS: **Smith & Noble**  
HVAC: **Carrier**  
PAINT: **Olympic’s Shark** (game-room walls), **Aria** (second-floor landing walls), **Aubergine** (pink bedroom walls), **Hallowed Hush** (blue bedroom walls), and **Delicate White** (ceilings and trim)

ABOVE: The second-floor landing has extra storage or hangout space for the occupants of the two bedrooms off of it; a wallpaper mural helps give this space its own identity. It is one of the house’s numerous HVAC zones, enabling room-by-room comfort; each zone is controllable with a smartphone app.

RIGHT: One of the two bedrooms has a blue-green-gray color scheme and X-motif furniture for an updated look. Its three-panel door, with a beachy washed-wood finish, is the style used throughout the house.



As a practical plus, the weather-resistant materials used on the house add durability to the exterior and mean less maintenance down the road. Preprimed radiata pine exterior trim conveys a traditional look but also offers the moisture resistance that comes from a modern pressure-treating process. The capped-polymer decking and porch flooring for the house’s multiple outdoor-living spaces provides a wood-like appearance that’s splinter-free underfoot and also rot- and mildew-resistant. On the roof, thick fiberglass asphalt shingles stand up to sun, salt air, and wind, and are also algae-resistant.

Innovative materials and high-tech systems increase the home’s energy efficiency as well. Closed-cell spray foam insulation fills the cavities between the framing timbers, with side and roof house wrap creating a layered barrier against cold and moisture. The hurricane-rated wood windows feature insulated laminated glass and aluminum-clad exteriors. For room-by-room comfort, the team chose single-phase variable refrigerant flow (VRF) for the HVAC system, enabling each room to have its own thermostatic control. It should improve





the house's energy efficiency by as much as 40 percent over a conventional system.

The family who eventually lives in the house can feel secure in the knowledge that the easy-to-use smart-home security system will ensure reliable monitoring and alerts. Wireless lighting controls can be set for different scenarios—such as “coming home,” with bright entry lighting, or “relaxed evening,” with soft ambient illumination—as well as occupancy sensors. The security system includes not only smoke, carbon monoxide, and intruder detection but also remote access to live video feeds with an e-mail or text-message alert system.

Multiple spaces for outdoor living, each with its own distinct look and all easily accessed from inside, provide the indoor-outdoor-living ideal popular today. The wraparound front porch evokes the traditional porches of Shingle-style houses but is designed a roomy 8 feet wide to allow for easy circulation and furniture placement. A backyard deck off the kitchen provides space for dining outdoors, with a durable



**ABOVE:** The third floor's built-in bunks show off their shipshape style with mahogany ceilings, white shiplap side walls, and sailboat-motif bed linens.

**LEFT:** The seafaring look continues in the bunk-room bath with nautical-themed wallpaper and accessories.

#### THIS PAGE

BUNK-ROOM AND BATH FURNISHINGS, LIGHTING, WALLPAPER, WINDOW SHADE, AND ACCESSORIES: **Serena & Lily**

DRAWER PULLS: **Emtek**  
PAINT: color matched to **Olympic's Blue Odyssey** (bunk-room floor)

CEILING FAN: **House of Antique Hardware**  
BATH FIXTURES & FITTINGS: **American Standard**  
FLOOR TILE: **Tile America**



**RIGHT:** Tucked into the back of the house, a deck and patio offer casual entertaining space that's screened from neighbors. Exterior doors lead out from the kitchen and screened porch; their three-over-one cottage style echoes the windows and is consistent throughout the house.

**BELOW:** A door in the dining room accesses the wraparound front porch and its swing. Keeping the home safe is a smart security system that includes cameras for intruder detection, e-mail alerts, touchscreen keypad displays, and a mobile app.

**BOTTOM:** Every beach house benefits from an outdoor shower enclosure—this one, made of weather-resistant cellular PVC, is built off a rear corner of the garage.



paver patio and built-in fire pit just two steps down from the deck. With the house's proximity to the ocean, an outdoor shower built off a rear corner of the oversize two-car garage should help keep sandy feet away from the house's wood floors.

But the screened porch off the living area may be the real open-air showpiece, according to Don Powers, who predicts that it will be one of the most-frequented spaces in the house. "With its fireplace, you can use that room well into fall and even winter," says Powers. "We intentionally didn't make the screens go all the way down to the floor. Instead, we added a solid board-and-batten wall for the lower 30 inches, which creates more of an enclosure."

The end result of the collaborative spirit—and skill—of the design and building team is clear from the first sight of the Idea House, with its mix of modern materials and amenities and classic architectural details. "There's a nice balance here," says Powers. "One of the interesting things about this house is that it shows that a traditionally designed house can meet every modern need, from energy efficiency to comfortable, stylish living." ■

#### THIS PAGE

EXTERIOR DOORS: **Simpson Door Company**  
 PORCH FLOORING AND DECKING: **AZEK**  
 PATIO PAVERS: **Unilock**  
 EXTERIOR LIGHTING: **Barn Light Electric**  
 SHOWER ENCLOSURE: **Walpole Outdoors**  
 SHOWER FITTINGS: **American Standard**  
 OUTDOOR FURNISHINGS AND ACCESSORIES: **hayneedle.com**  
 HOME SECURITY SYSTEM: **Bosch**  
 LANDSCAPING: **Matthew Smith for Shalvey Bros. Landscape**







**Outdoor grill**  
**American Muscle Grill**  
summersetgrills.com



**Fixtures & fittings**  
**American Standard**  
americanstandard.com



**Porch & deck floors**  
**AZEK**  
AZEK.com



**Light fixtures**  
**Barn Light Electric**  
barnlightelectric.com



**Countertops & sills**  
**Caesarstone**  
caesarstoneus.com



**Heating & cooling system**  
**Carrier**  
carrierductlessvrf.com



**Home lighting controls**  
**Caséta by Lutron**  
casetawireless.com



**Garage doors**  
**Clopay**  
clopaydoor.com



**Roofing**  
**GAF**  
gaf.com



**Weather barriers**  
**GCP Applied Technologies, Inc.**  
gcpat.com



**Furnishings & accessories**  
**hayneedle.com**  
hayneedle.com

# Beach House at East Matunuck

## Sponsors



**Spray foam insulation**  
**Icynene**  
icynene.com/en-us



**Exterior trim**  
**LIFESPAN Solid Select**  
timbertrading.com



**Interior & exterior paint**  
**Olympic**  
olympic.com



**Bathroom fan-lights**  
**Panasonic**  
us.panasonic.com/ventfans



**Shower system**  
**Schluter Systems**  
schlutersystems.com



**Interior & exterior doors**  
**Simpson Door Company**  
simpsondoor.com



**360 Smart Beds**  
**Sleep Number**  
sleepnumber.com



**Washers & dryers**  
**Speed Queen**  
speedqueen.com



**Outdoor shower**  
**Walpole Outdoors**  
walpoleoutdoors.com



**Insurance**  
**State Farm**  
statefarm.com

## Contributors

**AllModern**  
**Furnishings and accessories**  
allmodern.com

**Andersen**  
**Windows**  
andersenwindows.com

**Arnold Lumber**  
**Building materials distributor**  
arnoldlumber.com

**Boise Cascade**  
**Engineered flooring system**  
bc.com

**Bosch**  
**Security system**  
us.boschsecurity.com

**Bose**  
**Sound system**  
bose.com

**Diamond Cabinets**  
**Kitchen/bathroom cabinetry**  
diamondcabinets.com

**Emtek**  
**Cabinet and door hardware**  
emtek.com

**Goldberg Brothers**  
**Barn door hardware**  
goldbergbarntrack.com

**Philips**  
**Interior lighting fixtures**  
philips.com

**Raging River Counterworks**  
**Kitchen island countertop**  
rrcwoodcountertops.com

**RI3D**  
**Virtual 3-D tour**  
ri3d.net

**SBC**  
**Exterior shingles**  
sbccedar.com

**Serena & Lily**  
**Furnishings and accessories**  
serenaandlily.com

**Serena Shades by Lutron**  
**Remote-controlled shades**  
serenashades.com

**Shalvey Bros. Landscape, Inc.**  
**Landscape design and services**  
shalveybroslandscape.com

**Smith & Noble**  
**Window treatments**  
smithandnoble.com

**Stikwood**  
**Accent walls (game room)**  
stikwood.com

**Terrain**  
**Accessories**  
shopterrain.com

**Tile America**  
**Bathroom tile**  
tileamerica.com

**Tile Craft Design Center**  
**Bath and laundry room tile**  
www.tilecraftdesigncenter.com

**The Tile Shop**  
**Kitchen and bath tile**  
tileshop.com

**The Tin Shop**  
**Custom range hood**  
tinshop.co

**Unilock**  
**Landscaping pavers**  
unilock.com

**Vinotemp**  
**Wine and beverage refrigerators, beer dispenser**  
vinotemp.com

**Wickford Appliance**  
**Kitchen appliances**  
wickfordappliance.com



## Building Team

**Jeff Sweenor**  
**President**  
Sweenor Builders

**Bruce Charleson**  
**Project Manager**  
Sweenor Builders

**Don Powers**  
**Principal Architect**  
Union Studio Architecture & Community Design

**Christina Carlson**  
**Project Architect**  
Union Studio Architecture & Community Design

**Denise Enright**  
**Interior Designer**  
Denise Enright Interior Design

**Matthew Smith**  
**Landscape Designer**  
Shalvey Bros. Landscape, Inc.

**Claudia Jepsen**  
**Project Supervisor**  
This Old House Ventures, LLC



**This Old House**  
**Beach House**  
**at East Matunuck**  
**Rhode Island**

**Tile America**  
**Bathroom tile**  
tileamerica.com

**Tile Craft Design Center**  
**Bath and laundry room tile**  
www.tilecraftdesigncenter.com

**The Tile Shop**  
**Kitchen and bath tile**  
tileshop.com

**The Tin Shop**  
**Custom range hood**  
tinshop.co

**Unilock**  
**Landscaping pavers**  
unilock.com

**Vinotemp**  
**Wine and beverage refrigerators, beer dispenser**  
vinotemp.com

**Wickford Appliance**  
**Kitchen appliances**  
wickfordappliance.com

**Goldberg Brothers**  
**Barn door hardware**  
goldbergbarntrack.com

**Emtek**  
**Cabinet and door hardware**  
emtek.com

**Diamond Cabinets**  
**Kitchen/bathroom cabinetry**  
diamondcabinets.com

**Bose**  
**Sound system**  
bose.com

**Serena & Lily**  
**Furnishings and accessories**  
serenaandlily.com

**Serena Shades by Lutron**  
**Remote-controlled shades**  
serenashades.com

**Shalvey Bros. Landscape, Inc.**  
**Landscape design and services**  
shalveybroslandscape.com

**Smith & Noble**  
**Window treatments**  
smithandnoble.com

**Stikwood**  
**Accent walls (game room)**  
stikwood.com

**Goldberg Brothers**  
**Barn door hardware**  
goldbergbarntrack.com

**Emtek**  
**Cabinet and door hardware**  
emtek.com

**Diamond Cabinets**  
**Kitchen/bathroom cabinetry**  
diamondcabinets.com

**Bose**  
**Sound system**  
bose.com

**Serena & Lily**  
**Furnishings and accessories**  
serenaandlily.com

**Serena Shades by Lutron**  
**Remote-controlled shades**  
serenashades.com

**Shalvey Bros. Landscape, Inc.**  
**Landscape design and services**  
shalveybroslandscape.com

**Smith & Noble**  
**Window treatments**  
smithandnoble.com

**Stikwood**  
**Accent walls (game room)**  
stikwood.com

**Goldberg Brothers**  
**Barn door hardware**  
goldbergbarntrack.com

**Emtek**  
**Cabinet and door hardware**  
emtek.com

**Diamond Cabinets**  
**Kitchen/bathroom cabinetry**  
diamondcabinets.com

**Bose**  
**Sound system**  
bose.com

**Serena & Lily**  
**Furnishings and accessories**  
serenaandlily.com

**Serena Shades by Lutron**  
**Remote-controlled shades**  
serenashades.com

**Shalvey Bros. Landscape, Inc.**  
**Landscape design and services**  
shalveybroslandscape.com

**Smith & Noble**  
**Window treatments**  
smithandnoble.com

**Stikwood**  
**Accent walls (game room)**  
stikwood.com

**Goldberg Brothers**  
**Barn door hardware**  
goldbergbarntrack.com

**Emtek**  
**Cabinet and door hardware**  
emtek.com

**Diamond Cabinets**  
**Kitchen/bathroom cabinetry**  
diamondcabinets.com

**Bose**  
**Sound system**  
bose.com

**Serena & Lily**  
**Furnishings and accessories**  
serenaandlily.com

**Serena Shades by Lutron**  
**Remote-controlled shades**  
serenashades.com

**Shalvey Bros. Landscape, Inc.**  
**Landscape design and services**  
shalveybroslandscape.com

**Smith & Noble**  
**Window treatments**  
smithandnoble.com

**Stikwood**  
**Accent walls (game room)**  
stikwood.com

**Goldberg Brothers**  
**Barn door hardware**  
goldbergbarntrack.com

**Emtek**  
**Cabinet and door hardware**  
emtek.com

**Diamond Cabinets**  
**Kitchen/bathroom cabinetry**  
diamondcabinets.com

**Bose**  
**Sound system**  
bose.com

**Serena & Lily**  
**Furnishings and accessories**  
serenaandlily.com

**Serena Shades by Lutron**  
**Remote-controlled shades**  
serenashades.com

**Shalvey Bros. Landscape, Inc.**  
**Landscape design and services**  
shalveybroslandscape.com

**Smith & Noble**  
**Window treatments**  
smithandnoble.com

**Stikwood**  
**Accent walls (game room)**  
stikwood.com

**Goldberg Brothers**  
**Barn door hardware**  
goldbergbarntrack.com

**Emtek**  
**Cabinet and door hardware**  
emtek.com

**Diamond Cabinets**  
**Kitchen/bathroom cabinetry**  
diamondcabinets.com

**Bose**  
**Sound system**  
bose.com

**Serena & Lily**  
**Furnishings and accessories**  
serenaandlily.com

**Serena Shades by Lutron**  
**Remote-controlled shades**  
serenashades.com

**Shalvey Bros. Landscape, Inc.**  
**Landscape design and services**  
shalveybroslandscape.com

**Smith & Noble**  
**Window treatments**  
smithandnoble.com

**Stikwood**  
**Accent walls (game room)**  
stikwood.com

**Goldberg Brothers**  
**Barn door hardware**  
goldbergbarntrack.com

**Emtek**  
**Cabinet and door hardware**  
emtek.com

**Diamond Cabinets**  
**Kitchen/bathroom cabinetry**  
diamondcabinets.com

**Bose**  
**Sound system**  
bose.com

**Serena & Lily**  
**Furnishings and accessories**  
serenaandlily.com

**Serena Shades by Lutron**  
**Remote-controlled shades**  
serenashades.com

**Shalvey Bros. Landscape, Inc.**  
**Landscape design and services**  
shalveybroslandscape.com

**Smith & Noble**  
**Window treatments**  
smithandnoble.com

**Stikwood**  
**Accent walls (game room)**  
stikwood.com

**Goldberg Brothers**  
**Barn door hardware**  
goldbergbarntrack.com

**Emtek**  
**Cabinet and door hardware**  
emtek.com

**Diamond Cabinets**  
**Kitchen/bathroom cabinetry**  
diamondcabinets.com

**Bose**  
**Sound system**  
bose.com

**Serena & Lily**  
**Furnishings and accessories**  
serenaandlily.com

**Serena Shades by Lutron**  
**Remote-controlled shades**  
serenashades.com

**Shalvey Bros. Landscape, Inc.**  
**Landscape design and services**  
shalveybroslandscape.com

**Smith & Noble**  
**Window treatments**  
smithandnoble.com

**Stikwood**  
**Accent walls (game room)**  
stikwood.com

**Goldberg Brothers**  
**Barn door hardware**  
goldbergbarntrack.com

**Emtek**  
**Cabinet and door hardware**  
emtek.com

**Diamond Cabinets**  
**Kitchen/bathroom cabinetry**  
diamondcabinets.com

**Bose**  
**Sound system**  
bose.com

**Serena & Lily**  
**Furnishings and accessories**  
serenaandlily.com

**Serena Shades by Lutron**  
**Remote-controlled shades**  
serenashades.com

**Shalvey Bros. Landscape, Inc.**  
**Landscape design and services**  
shalveybroslandscape.com

**Smith & Noble**  
**Window treatments**  
smithandnoble.com

**Stikwood**  
**Accent walls (game room)**  
stikwood.com

**Goldberg Brothers**  
**Barn door hardware**  
goldbergbarntrack.com

**Emtek**  
**Cabinet and door hardware**  
emtek.com

**Diamond Cabinets**  
**Kitchen/bathroom cabinetry**  
diamondcabinets.com

**Bose**  
**Sound system**  
bose.com

**Serena & Lily**  
**Furnishings and accessories**  
serenaandlily.com

**Serena Shades by Lutron**  
**Remote-controlled shades**  
serenashades.com

**Shalvey Bros. Landscape, Inc.**  
**Landscape design and services**  
shalveybroslandscape.com

**Smith & Noble**  
**Window treatments**  
smithandnoble.com

**Stikwood**  
**Accent walls (game room)**  
stikwood.com

**Goldberg Brothers**  
**Barn door hardware**  
goldbergbarntrack.com

**Emtek**  
**Cabinet and door hardware**  
emtek.com

**Diamond Cabinets**  
**Kitchen/bathroom cabinetry**  
diamondcabinets.com

**Bose**  
**Sound system**  
bose.com

**Serena & Lily**  
**Furnishings and accessories**  
serenaandlily.com

**Serena Shades by Lutron**  
**Remote-controlled shades**  
serenashades.com

**Shalvey Bros. Landscape, Inc.**  
**Landscape design and services**  
shalveybroslandscape.com

**Smith & Noble**  
**Window treatments**  
smithandnoble.com

**Stikwood**  
**Accent walls (game room)**  
stikwood.com

**Goldberg Brothers**  
**Barn door hardware**  
goldbergbarntrack.com

**Emtek**  
**Cabinet and door hardware**  
emtek.com

**Diamond Cabinets**  
**Kitchen/bathroom cabinetry**  
diamondcabinets.com

**Bose**  
**Sound system**  
bose.com

**Serena & Lily**  
**Furnishings and accessories**  
serenaandlily.com

**Serena Shades by Lutron**  
**Remote-controlled shades**  
serenashades.com

**Shalvey Bros. Landscape, Inc.**  
**Landscape design and services**  
shalveybroslandscape.com

**Smith & Noble**  
**Window treatments**  
smithandnoble.com

**Stikwood**  
**Accent walls (game room)**  
stikwood.com

**Goldberg Brothers**  
**Barn door hardware**  
goldbergbarntrack.com

**Emtek**  
**Cabinet and door hardware**  
emtek.com

**Diamond Cabinets**  
**Kitchen/bathroom cabinetry**  
diamondcabinets.com

**Bose**  
**Sound system**  
bose.com

**Serena & Lily**  
**Furnishings and accessories**  
serenaandlily.com

**Serena Shades by Lutron**  
**Remote-controlled shades**  
serenashades.com